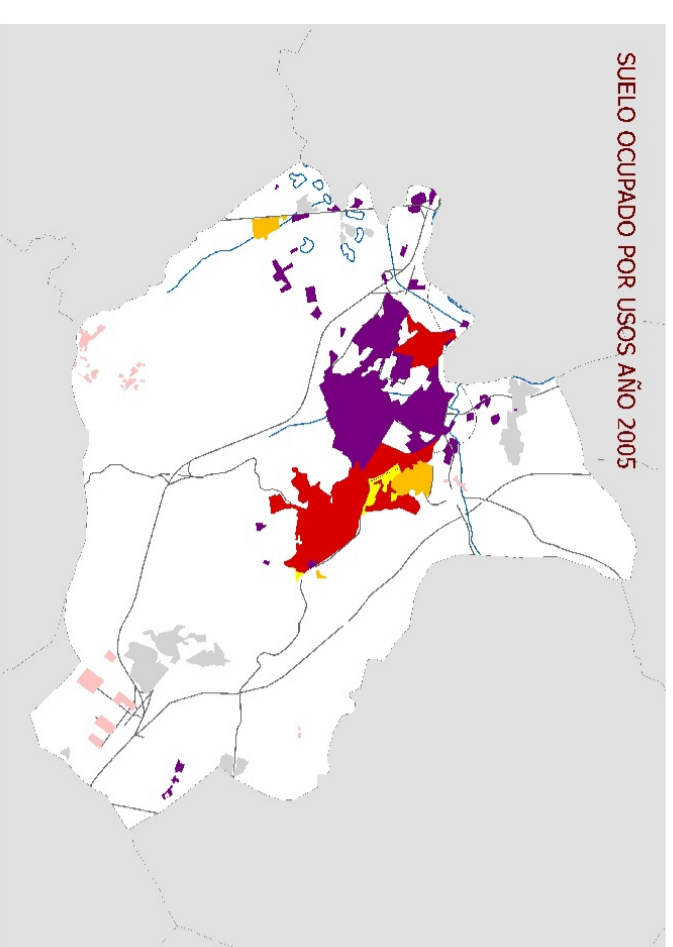
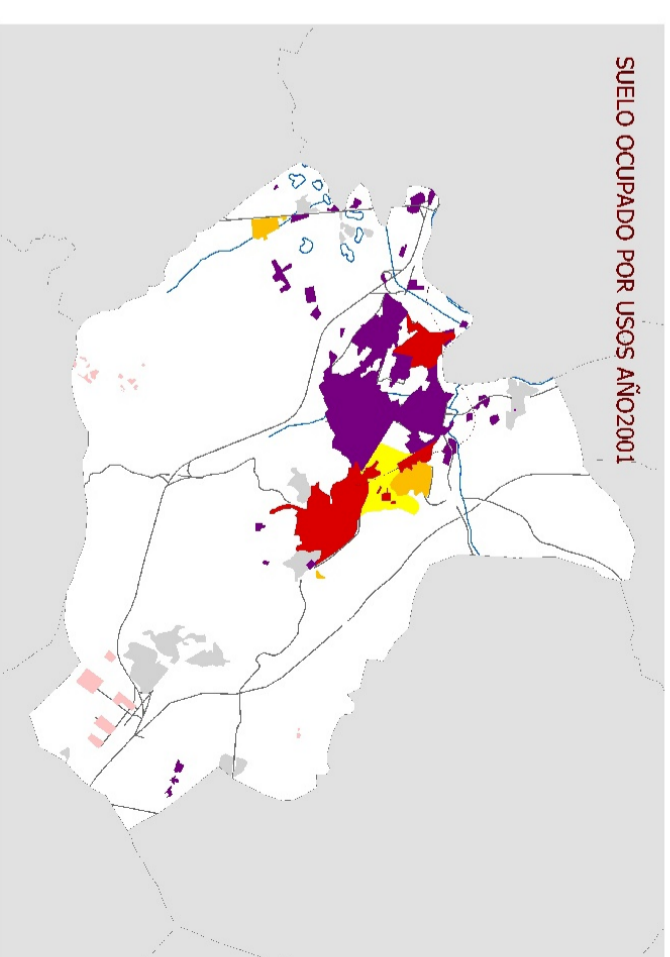
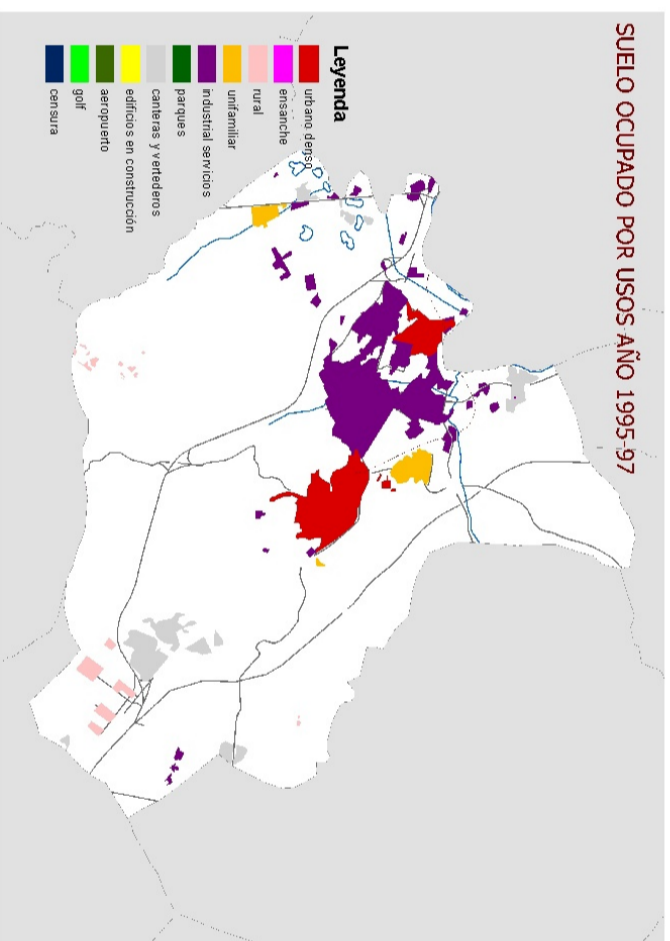
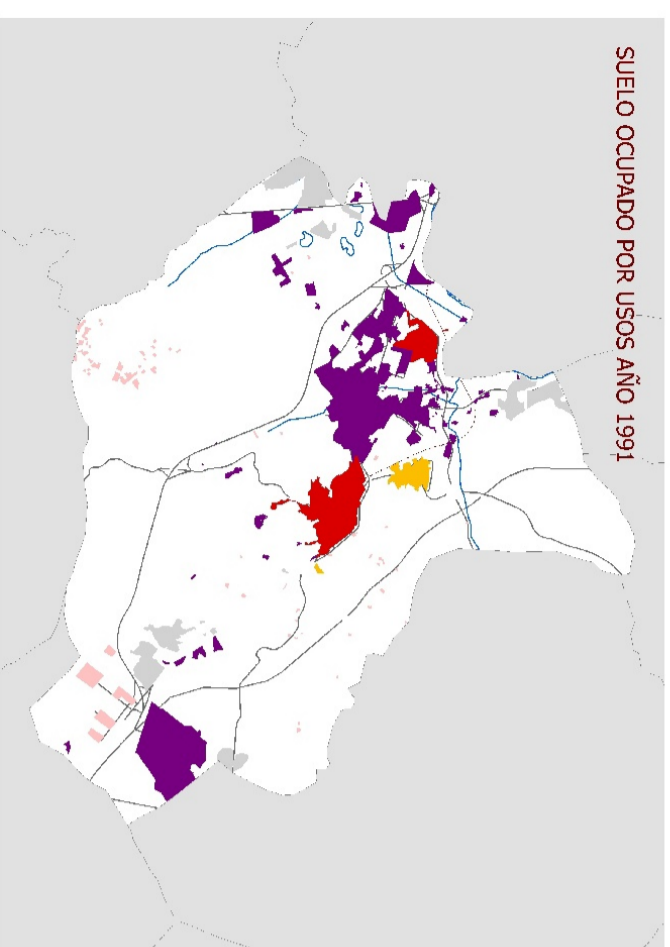
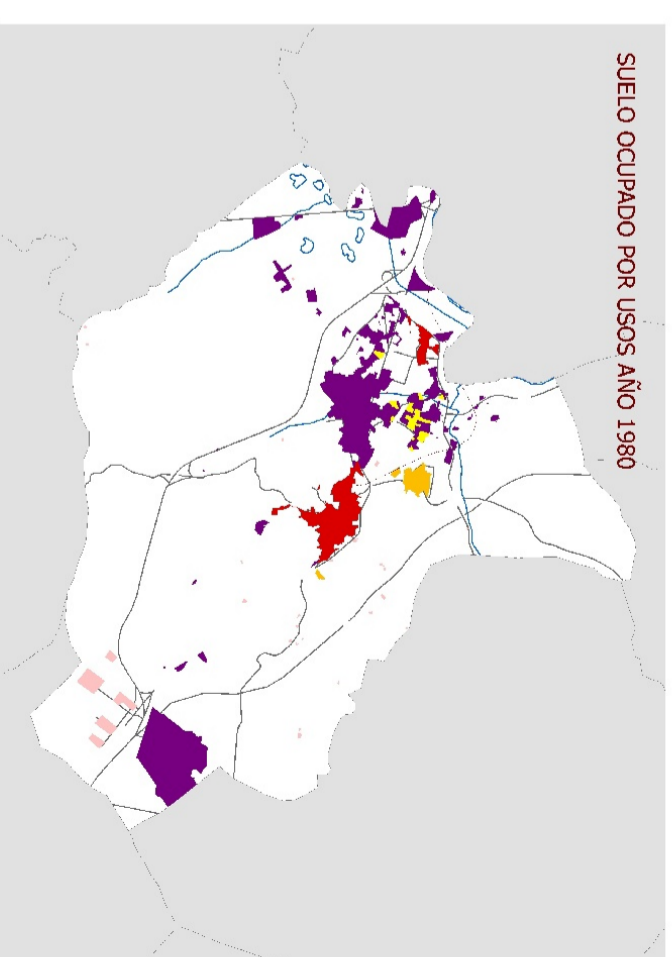
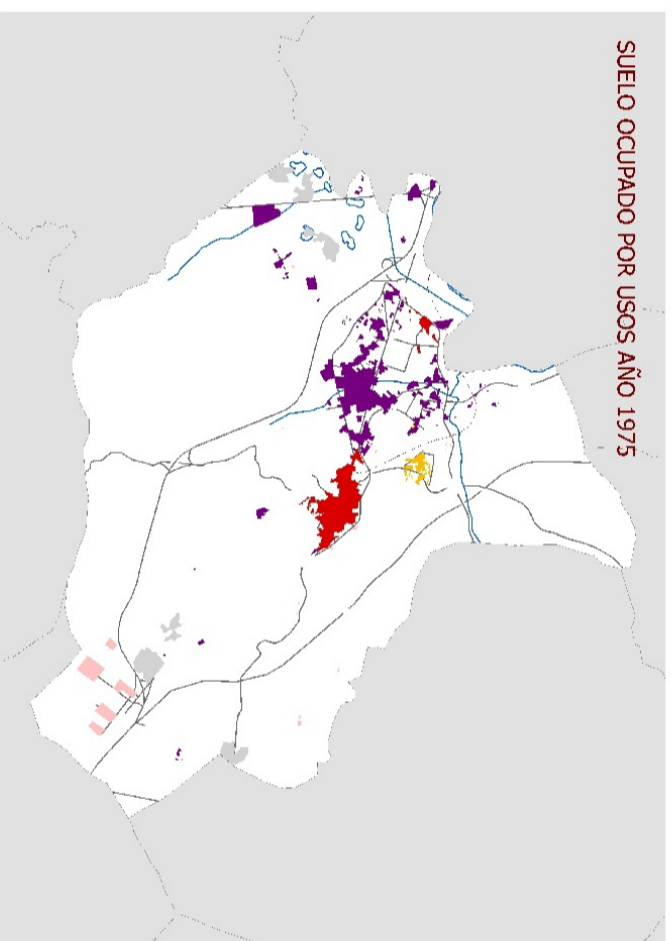
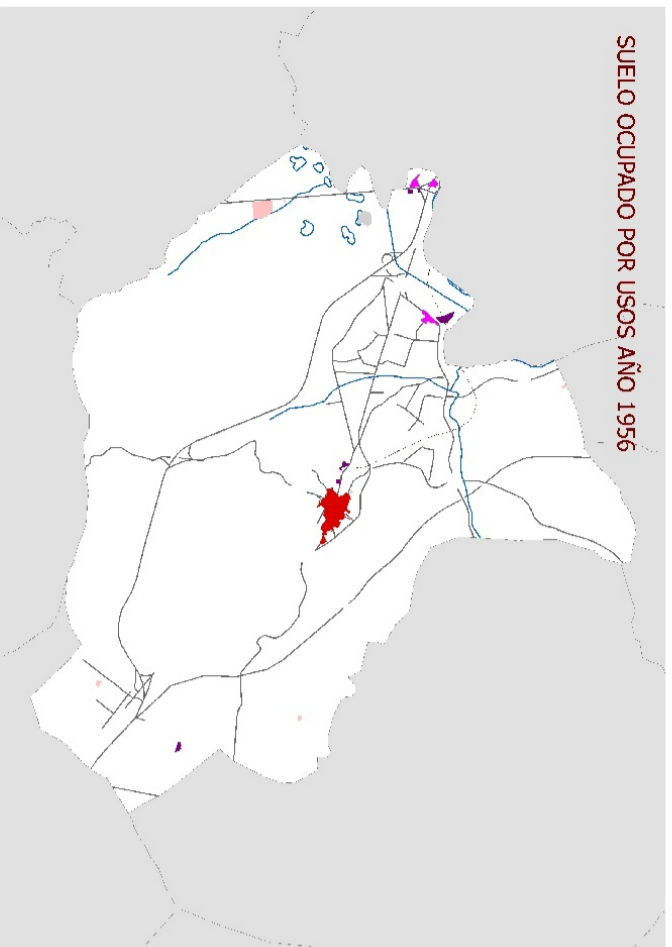


SUELO OCUPADO POR USOS Y AÑOS EN ARGANDA DEL REY



- Leyenda**
- urbano denso
 - ensanche
 - rural
 - unifamiliar
 - industrial servicios
 - parques
 - canchales y verdaderos
 - edificios en construcción
 - aeropuerto
 - golf
 - cenoura

PERIODOS	HECTAREAS	media año(HA)
1956 A 1975	362,65	19,09
1975 A 1980	349,25	69,85
1980 A 1991	302,82	27,53
1991 A 1995	-121,15	-30,29
1995_97 A 2001	150,01	30,00
2001 A 2005	49,25	12,31

