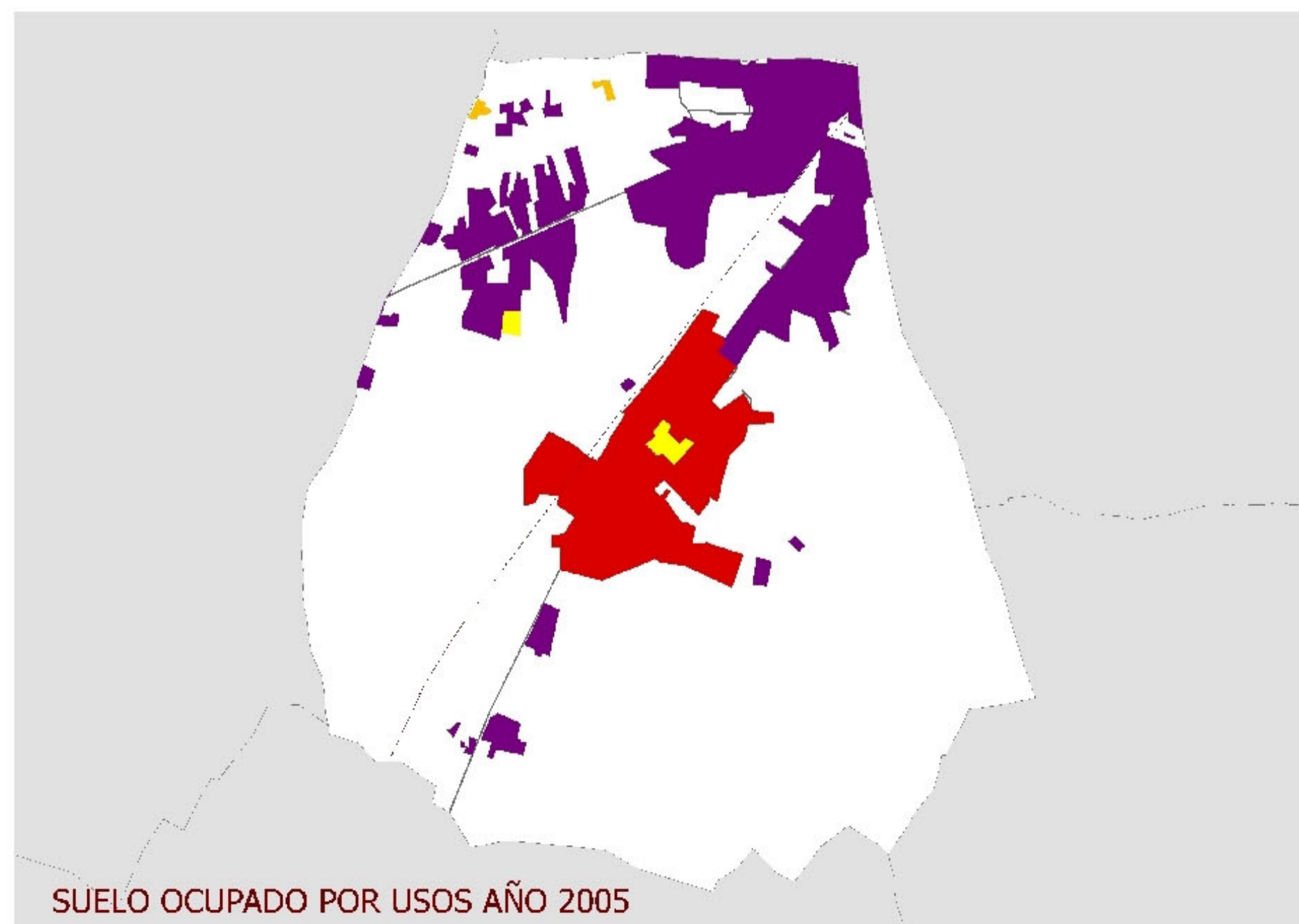
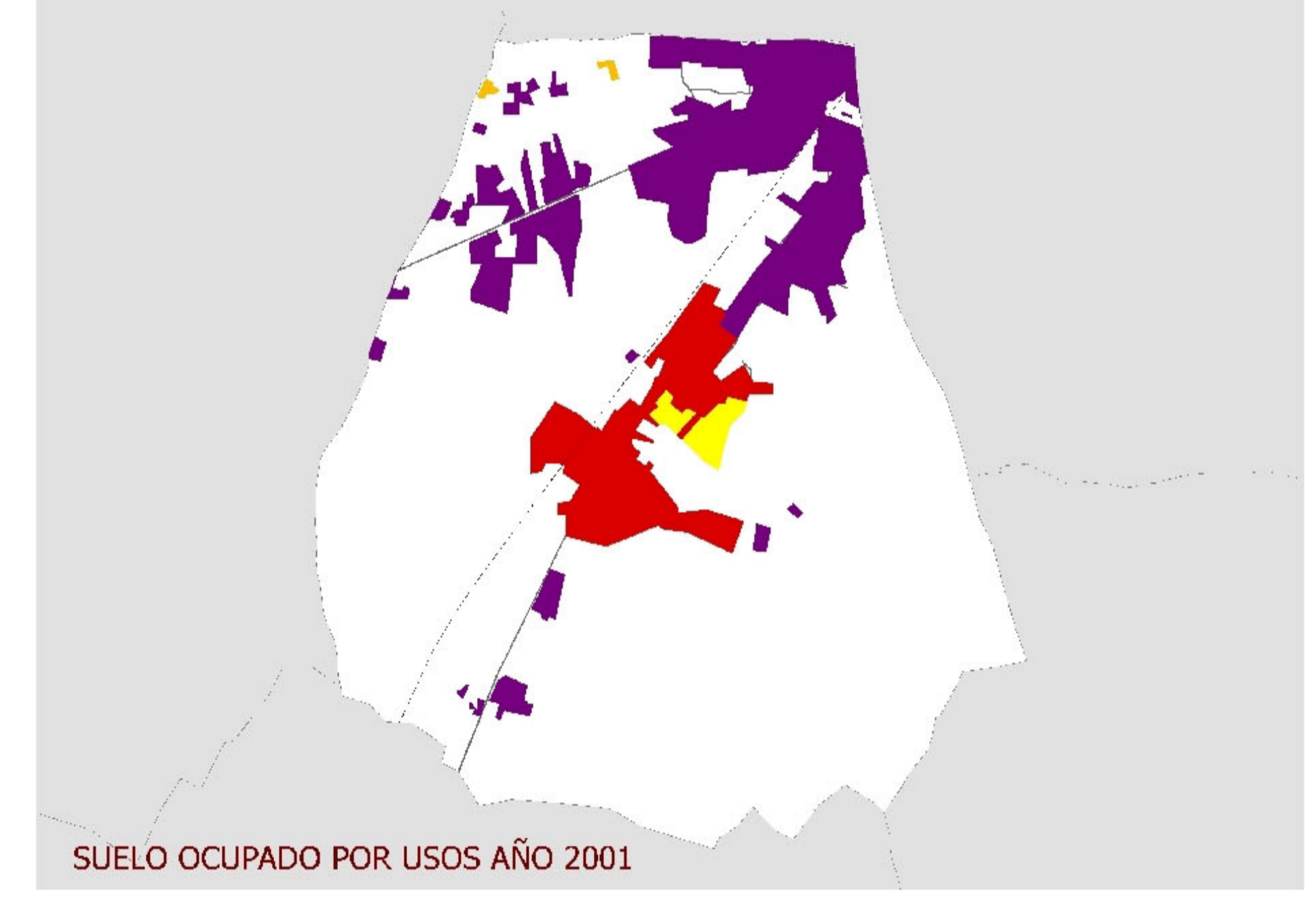
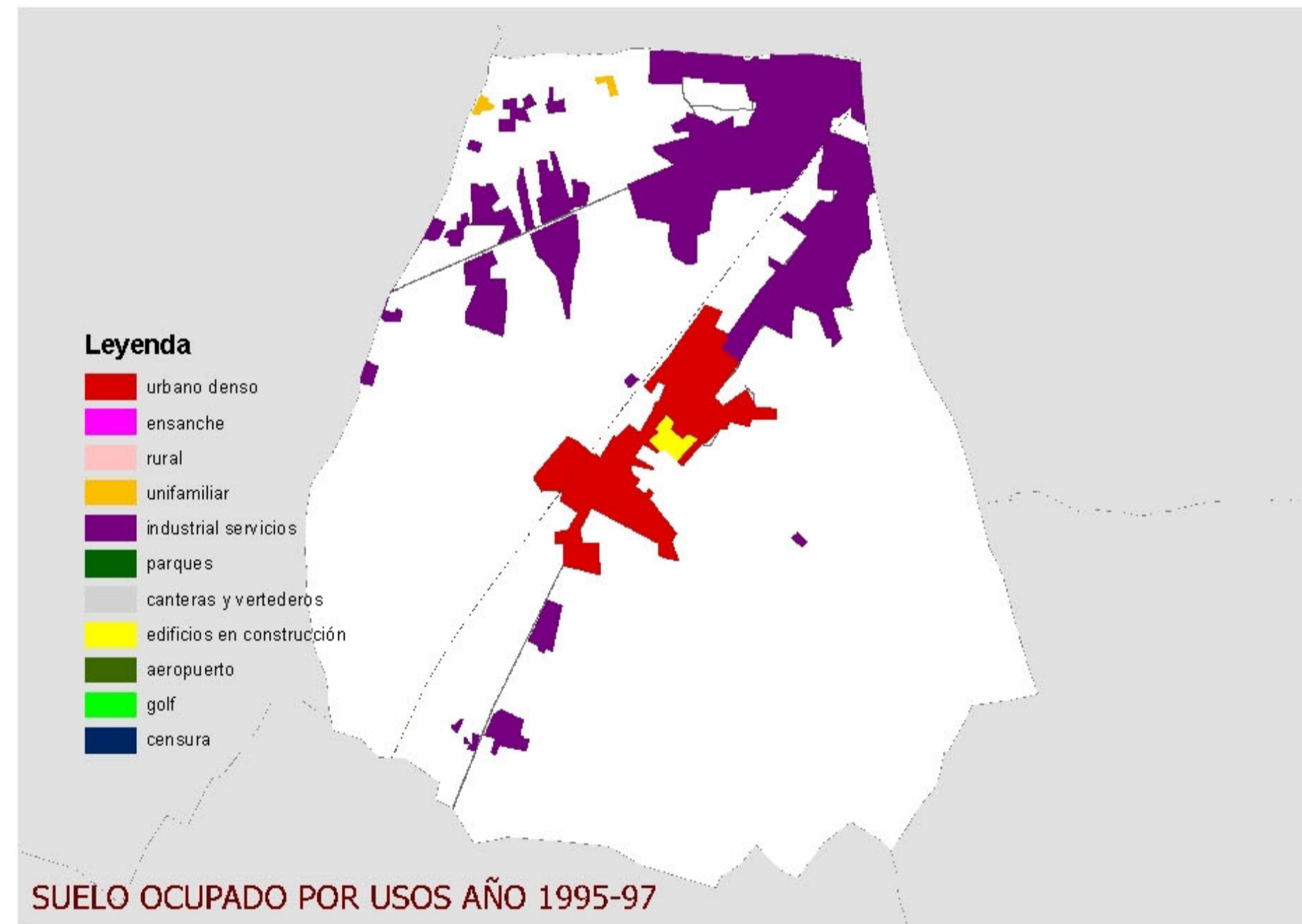
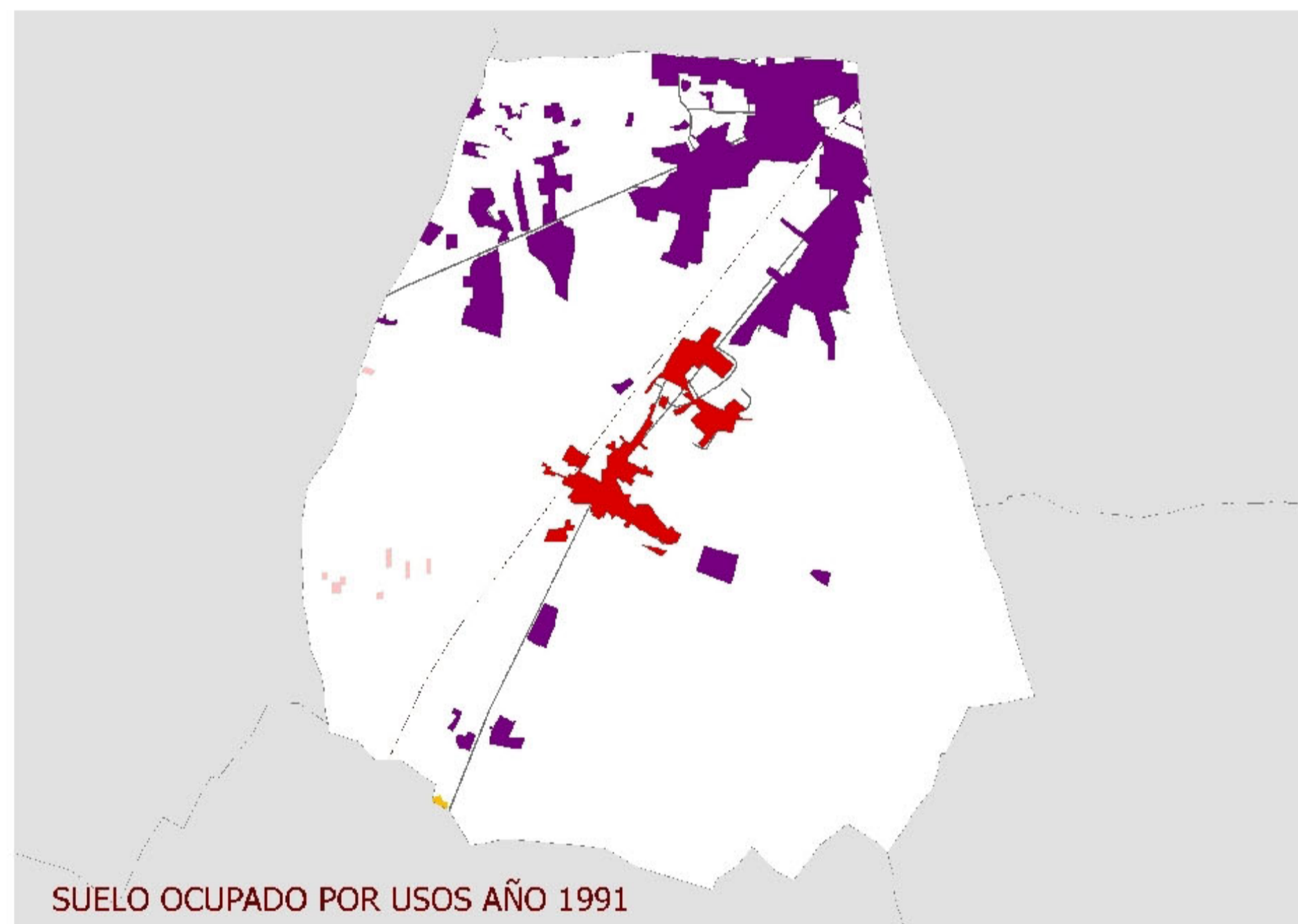
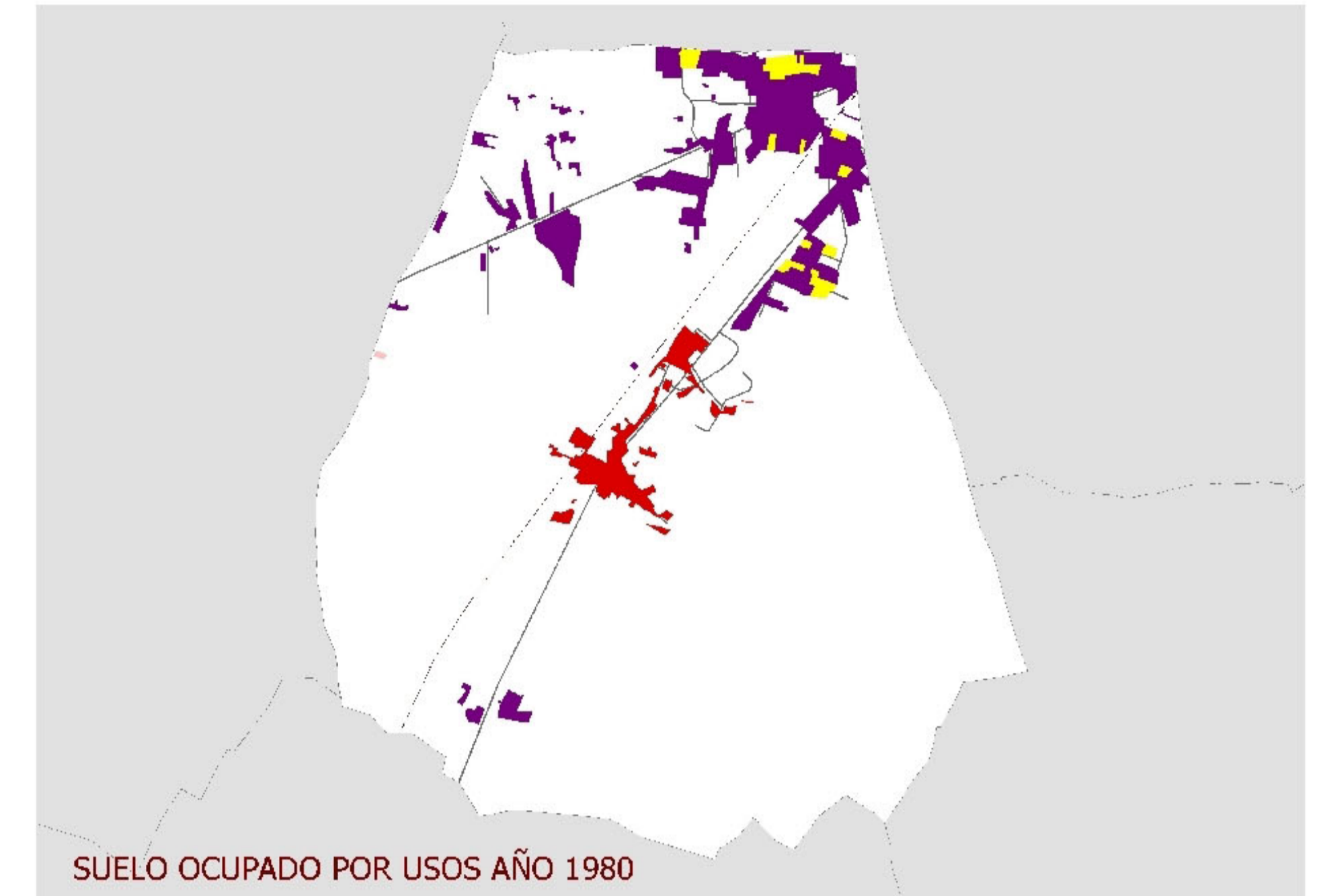
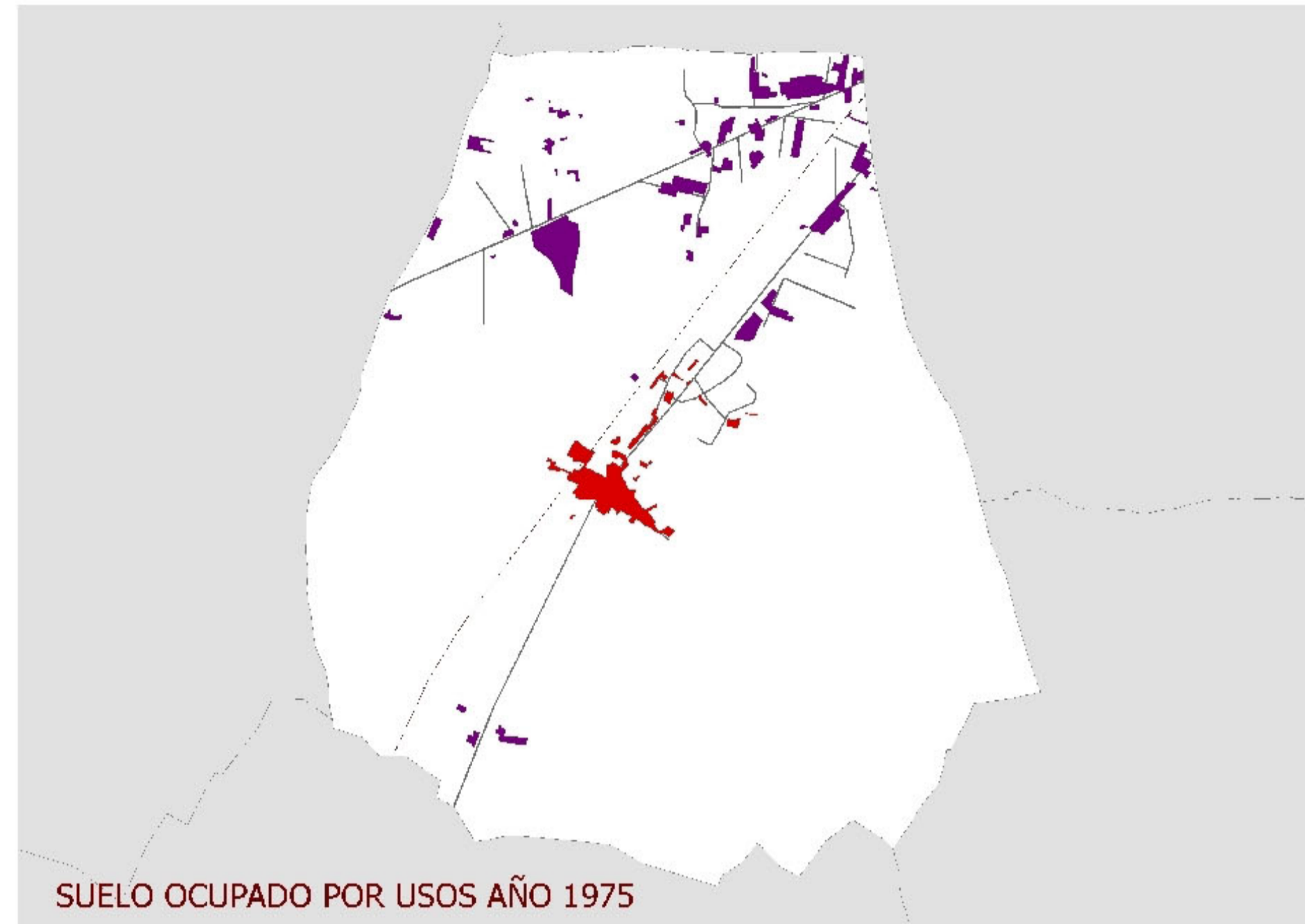
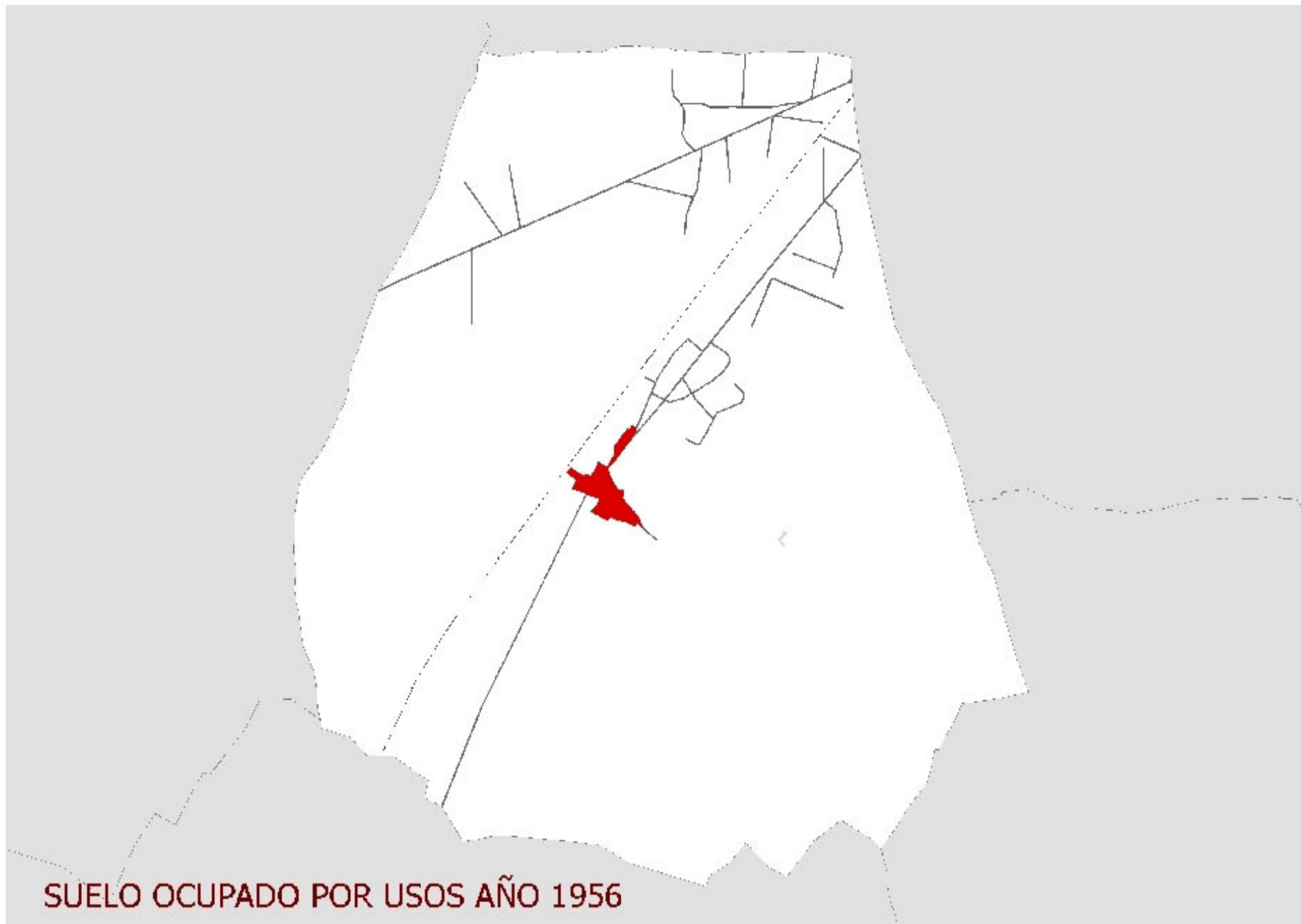


SUELO OCUPADO POR USOS y AÑOS EN HUMANES DE MADRID



OCUPACION DE SUELO EN HA		
PERIODOS	HECTAREAS	media año(HA)
1956 A 1975	54,28	2,86
1975 A 1980	88,00	17,78
1980 A 1991	83,40	7,58
1991 A 1995	89,58	22,40
1995_97 A 2001	43,69	8,74
2001 A 2005	31,86	7,96

