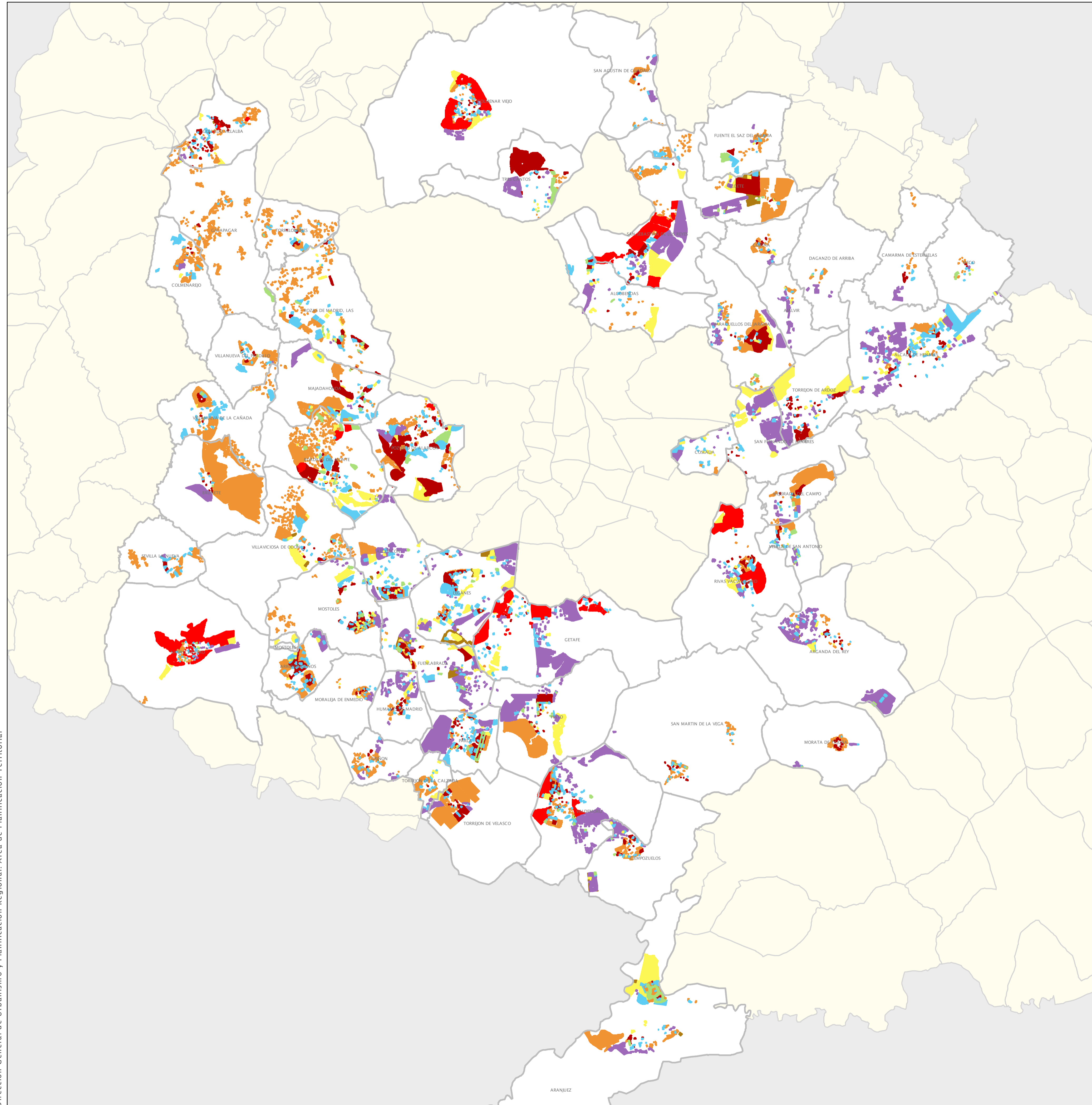


5.USOS DEL SUELO VACANTE 2004



SUPERFICIE DE SUELO VACANTE SEGÚN USOS (M2)								
INE	MUNICIPIOS	RESIDENCIAL EN GENERAL	RESIDENCIAL MUTIFAMILIAR	RESIDENCIAL UNIFAMILIAR	INDUSTRIAL	TERCIARIO	COMERCIAL	EQUIPAMIENTO
2	AJALVIR	0	0	89.313	415.289	0	9.702	17.469
5	ALCALA DE HENARES	0	249.194	818.808	3.817.933	731.693	27.962	2.710.730
6	ALCOBENDAS	0	143.806	99.813	677.649	9.323	911.778	434.068
7	ALCORCON	0	417.527	907.434	1.221.297	245.373	109.222	725.144
9	ALGETE	0	1.878.619	3.894.600	1.531.725	477.549	1.100	178.170
13	ARANJUEZ	0	117.528	3.093.755	620.528	3.089.504	129.511	867.373
14	ARGANDA DEL REY	0	46.928	53.414	3.980.374	9.326	156.085	197.502
15	ARROYOMOLINOS	0	632.672	1.601.703	626.603	243.859	110.204	499.646
22	BOADILLA DEL MONTE	636.404	1.060.022	2.591.244	35.664	1.250.614	144.374	851.320
26	BRUNETE	0	19.310	12.397.629	1.047.609	0	0	21.658
32	CAMARMA DE ESTERUELAS	0	69.953	65.521	293.101	0	0	48.072
40	CIEMPOZUELOS	0	159.421	282.170	1.396.286	24.654	26.451	131.888
41	COBENÁ	0	29.182	387.982	104.619	0	29.937	42.661
44	COLMENAREJO	0	8.181	875.311	116.801	24.343	0	449.318
45	COLMENAR VIEJO	1.242.710	37.260	333.198	181.946	183.950	0	350.912
47	COLLADO VILLALBA	46.676	459.521	554.367	39.557	142.694	0	152.563
49	COSLADA	0	82.990	480.448	352	78.485	407.076	0
53	DAGANZO DE ARRIBA	0	0	158.726	159.130	0	0	18.880
58	FUENLABRADA	0	607.032	192.250	1.795.695	688.860	143.305	348.049
59	FUENTE EL SAZ DE JARAMA	0	82.751	245.862	32.375	0	2.520	380.580
61	GALAPAGAR	0	11.208	1.396.526	29.305	0	605	22.044
65	GETAFE	3.873.696	43.861	6.407	4.890.285	714.996	4.661	519.891
66	GRINÓN	0	26.288	653.849	302.558	0	0	89.151
73	HUMANES DE MADRID	0	83.497	180.804	885.113	280.539	0	126.861
74	LEGANÉS	0	672.169	228.509	3.113.412	1.319.255	345.732	1.194.009
80	MAJADAHONDA	0	976.813	2.507.324	705.059	556.486	10.472	774.918
83	MECO	0	3.229	17.304	59.414	0	14.214	30.489
84	MEJORADA DEL CAMPO	0	167.872	3.213.269	323.195	0	0	107.012
88	MORALEJA DE EN MEDIO	0	15.802	251.856	88.274	17.059	0	31.128
91	MORATA DE TAJUÑA	0	29.496	160.729	141.101	0	0	6.708
92	MOSTOLES	0	466.496	446.897	265.351	602.792	42.219	344.289
96	NAVALCARNERO	5.260.198	6.379	93.694	486.878	565.855	0	37.156
104	PARACUELLOS	0	1.647.984	1.553.042	965.893	456.492	50.123	112.303
106	PARLA	0	776.017	445.485	4.516.950	44.325	42.058	1.047.821
113	PINTO	0	726.406	4.034.248	2.839.680	1.276.442	0	115.279
115	POZUELO DE ALARCÓN	0	1.149.625	871.229	1.266.169	0	0	1.311.351
123	RIVAS-VACIAMADRID	4.729.498	241.016	292.043	652.051	81.677	0	371.316
127	LAS ROZAS	0	514.776	1.674.395	9.678	234.509	29.978	1.086.409
129	SAN AGUSTÍN DEL GUADALIX	0	35.083	442.833	439.627	0	0	65.454
130	S.FERNANDO DE HENARES	0	11.514	3.127	3.621.904	1.115.382	380.149	109.084
132	SAN MARTÍN DE LA VEGA	0	24.000	326.200	13.148	0	0	64.333
134	SAN SEBASTIÁN DE LOS REYES	4.504.875	306.323	589.773	4.261.212	1.899.090	0	342.348
141	SEVILLA LA NUEVA	0	108.431	817.759	47.746	0	0	210.957
148	TORREJÓN DE ARDOZ	0	923.615	100.674	882.841	0	3.290.349	62.173
149	TORREJÓN DE LA CALZADA	0	1.627	532.997	172.655	215.911	0	77.660
150	TORREJÓN DE VELASCO	0	594.964	4.707.556	376.791	156.090	0	56.410
152	TORRELODONES	0	62.199	879.686	43.009	0	0	178.697
161	VALDEMORO	2.007.564	264.826	699.891	3.574.382	37.831	99.813	450.601
167	VELILLA DE SAN ANTONIO	0	78.944	457.297	241.923	7.747	0	109.306
176	VILLANUEVA DE LA CAÑADA	0	117.887	2.041.193	49.005	0	0	852.414
177	VILLANUEVA DEL PARDILLO	0	40.469	870.098	2.519	35.627	0	272.184
181	VILLAVICIOSA DE ODON	0	90.965	1.716.669	33.111	937.144	20.428	483.132
903	TRES CANTOS	0	3.312.094	70.641	1.075.708	33.579	0	38.878
TOTAL ÁMBITO METROPOLITANO		22.403.291	22.830.329	61.276.716	53.803.614	19.639.199	6.293.100	19.534.874

Legenda

- Residencial
- Residencial Multifamiliar
- Residencial Unifamiliar
- Industrial
- Terciario y Comercial
- Equipamiento
- Deportivo
- Servicios
- Sin Datos
- Municipios Área de estudio
- Resto de municipios

